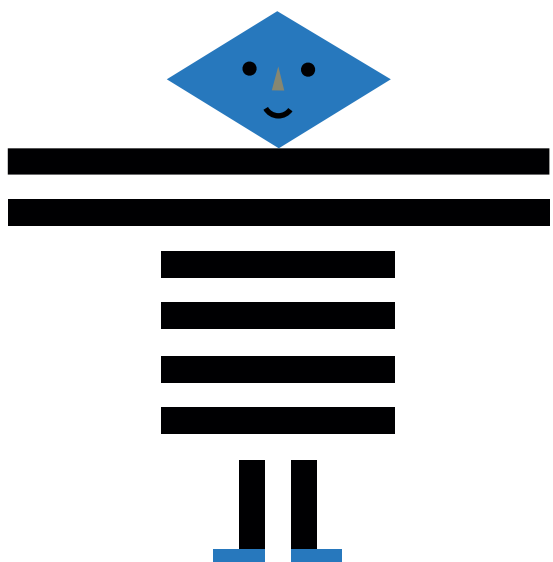


Sol LeWitt was an American artist who believed that the idea for an artwork can also be art even if the idea is never carried out. Sol's art exists mainly as an idea on paper. But his art also exists in real life, for example in the large wall drawings that students have created here.



DRAWING DAYS

Come to one of our Drawing Days and get to work with one of Sol LeWitt's instructions. Scan the QR code for more info.

LOTS MORE TO DISCOVER AND DO

Visit the Jewish Museum junior, where you can bake bread, write Hebrew letters and have fun making things in the studio.

The puzzles and tactile paintings in the Sol LeWitt Playground are based on Wall Drawings #391, #780 and #852/#853

Jewish
Museum
junior



Looking at
and playing
with Sol
LeWitt's art



What can you do here?

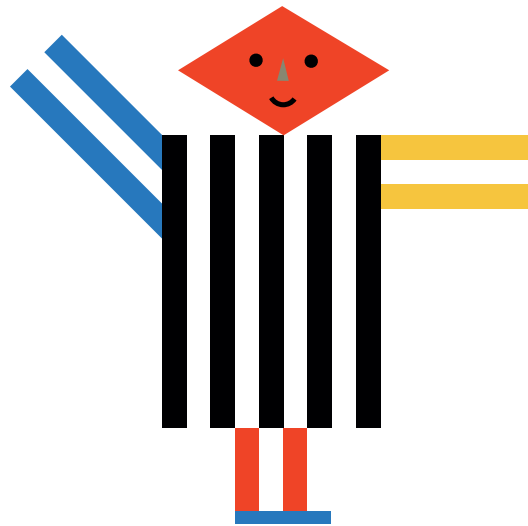
Explore the exhibition with the looking tips.
Play and make a puzzle in the Playground
next to the Museum Café.

Tips*

* Take care: you are not allowed to touch the artworks.

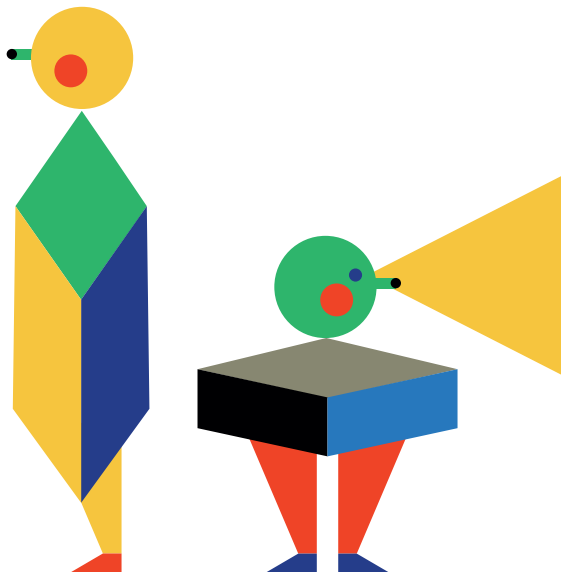
Gestures

Try using three gestures to remind yourself how the drawings are constructed. Which stripes are upright, which are horizontal, and which are diagonal? Got it? Then you'll be able to complete the puzzle in the Playground.



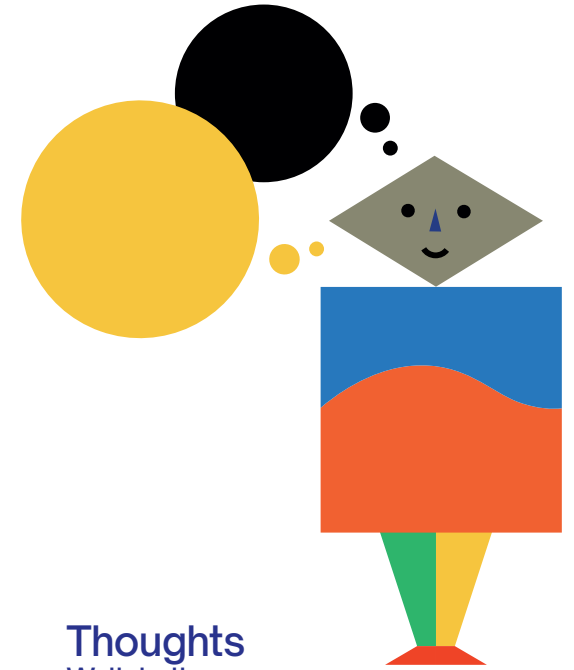
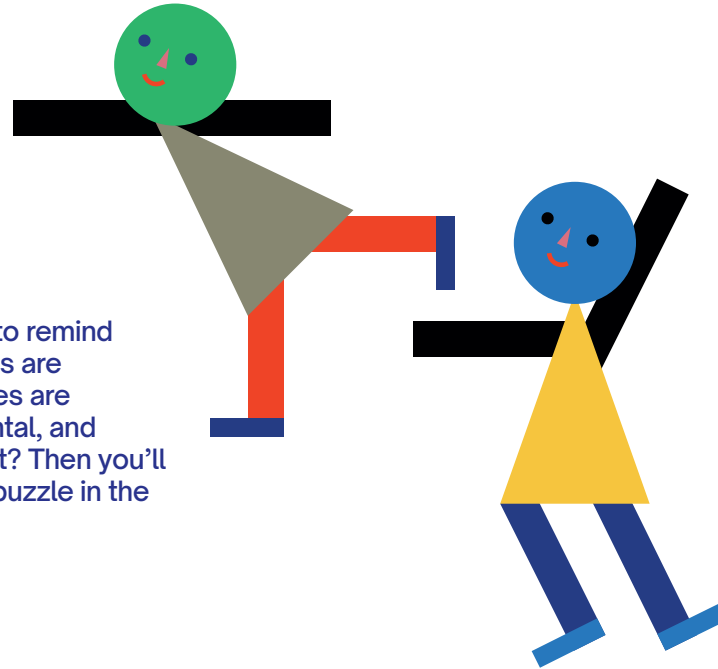
No looking

Choose an artwork and get your mum/dad/grandma/grandpa or someone else to stand with their back to it so that they can't see it. Now describe what the artwork looks like as precisely as possible. When you are finished, the other person can turn around: is it how they imagined it?



Act out an artwork

Choose an artwork but don't tell anyone which one you have chosen. Find a place in the gallery and act out the artwork without talking. Can the others guess which artwork it is?



Thoughts

Walk to the corner with the wall drawing with yellow and purple, red and green, blue and orange. Do the colours make you think of anything? Which colour makes you happy, sad, angry, scared or calm?

Imagine that you couldn't see colours. Would you then be able to feel them? You can test this in the Playground.

To the Playground

Go through the glass doors and follow the route to the Playground, where you can play with Sol's art. Do you remember what the wall with the black and coloured stripes looked like? Try to recreate it here or make something completely different. You can also make a jigsaw puzzle and feel colours.

